

Dynamics

<i>pp</i>	<i>p</i>	<i>mp</i>	<i>mf</i>	<i>f</i>	<i>ff</i>
PIANISSIMO	PIANO	MEZZO PIANO	MEZZO FORTE	FORTE	FORTISSIMO
very soft (v. quiet)	soft (quiet)	moderately soft	moderately loud	loud	very loud
crescendo (cresc.)			diminuendo (dim.)		
gradually getting louder			gradually getting quieter		

Tempo

LARGO	LENTO/ ADAGIO	ANDANTE/ MODERATO	ALLEGRO/ VIVACE	PRESTO
v. slow	slow	walking pace/ moderate	quite fast	very quick

- **Accelerando:** gradually getting faster
- **Rallentando/ritardando:** gradually getting slower
- **A tempo:** return to the original speed
- **Ritenuito:** in slower time
- **Rubato:** rhythms are played in a more free/flexible way ('robbed time').

Time values

NOTE	NAME	LENGTH (duration)	REST
	Semibreve	4 beats	
	Minim	2 beats	
	Crotchet	1 beats	
	Quaver	1/2 beats	
	Semiquaver	1/4 beats	

A dot after the note increases its length by half:

	Dotted minim		
	Dotted crotchet		

Groups of quavers/semiquavers are usually beamed together:



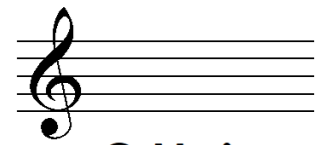
Terms and signs

#	Sharp	Raises a note by a semitone.
b	Flat	Lowers a note by a semitone.
	Natural	Cancels a previous sharp or flat for a note.
	Staccato	Detached.
	Slur	Play smoothly.
	Tie	Hold the notes for the full value of the tied notes.
	Accent	Emphasize the note (play forcefully).
	Pause	Hold the note longer.
<i>sfz</i>	Sforzando	Sudden stress/ accent.

Music terms and signs

Glossary - WJEC GCSE Music

Key signatures



C Major



G Major D Major A Major E Major



F Major Bb Major Eb Major Ab Major

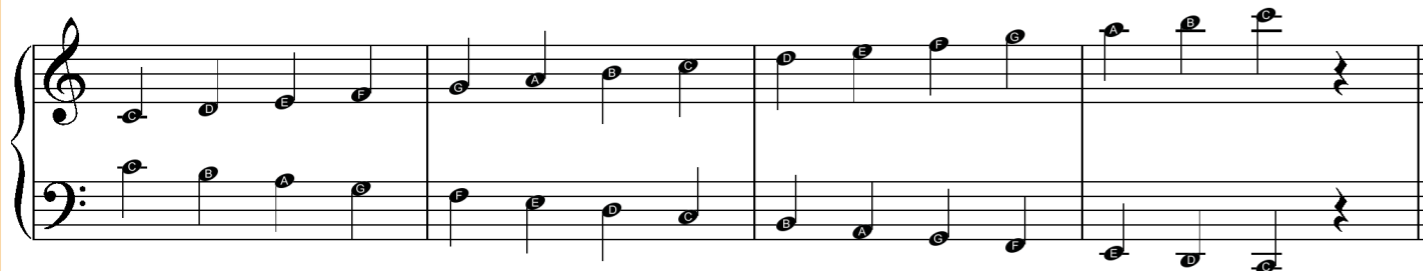
F C G D A E B

Order of sharps # →

← Order of flats b

time signature
treble clef
barline
repeat sign
stave
bar
bass clef
key signature
notes on the lines
notes in the spaces

Treble clef notes



Bass clef notes

Time signatures



Two crotchet beats per bar: simple duple



Two dotted crotchet beats per bar: compound duple



Three crotchet beats per bar: simple triple



Three dotted crotchet beats per bar: compound triple



Four crotchet beats per bar: simple quadruple



Four dotted crotchet beats per bar: compound quadruple



A triplet is when three notes are played in the time of two.

M - Metre

- Metre is another word for time signature
- Top number - how many beats are in the bar
- Bottom number – the type of beat in the bar
- Common time – 4/4
- Compound time – 8 at the bottom (groups of 3 quavers)
- Simple time – pulse divisible by 2
- Duple time – pulse of two beats in a bar
- Triple time – pulse of three beats in a bar
- Quadruple time – pulse of 4 beats in a bar
- Additive rhythm – subtle addition and subtraction to metre (7/8 - 9/8 - 8/8...)

T – Tempo

- Pulse = beat
- Presto – very fast
- Allegro – fast
- Andante – walking pace
- Adagio - slow
- Rubato. BPM. MM



T – Tonality





- Major – a happier, brighter sounding key
- Minor – a sadder, more gloomy sounding key
- Modal – a piece is in a mode rather than a key
- A tonal – a piece with no key
- Key signature indicates the key
- Modulation to close relatives
- Pentatonic. Blues

GCSE Music


The Musical Elements

T - Texture

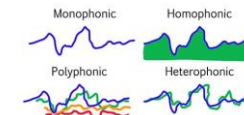
S – Sonority/Timbre

- Mute – Con Sordino - often used on brass instruments. Creates a harsher sound – often used in jazz. Dulls the sound on a string instrument
- Con arco – when a string player uses the bow (the most common)
- Pizzicato – when a string player plucks their instrument  
- Distortion – the 'angry' sound you often hear on an electric guitar on rock songs Reverb. CHorus. ADT. DIT
- Sustain pedal – when the pianist holds the pedal to make the notes last longer 
- Palm mute, hammer-on, pull-off, 
- Belt, rap, beat-box, scat-sing, Vibrato
- Slap bass * Extremities * Glissando/Portamento

P – Pitch:Harmony

- Consonant – when the harmonies sound 'nice' or 'matching'
- Dissonant – when notes clash (very common in Western Classical Since 1910)
- Pedal – a long held note in the bass with moving harmony (chords) above
- Inverted pedal – a long held note in the treble
- Tonic (I) - In the key of C major, this would be C
- Dominant (V) - In the key of C major, this would be G (count up from C to G = 5)
- Subdominant (IV) - In the key of C major, this would be F (count from C to F = 4)
- Drone – a long held note(s) (usually the tonic and/or dominant) 
- Power chords

- Monophonic – one single line of music
- Homophonic – when the music moves together as one
- Polyphonic/contrapuntal – when the music has several independent lines of music that interweave
- Octaves - thickens the texture (often doubling at the octave)
- Call and Response
- A cappella – without instrumental accompaniment
- Melody and accompaniment – most common in most pop/rock songs
- Imitation – a specific type of polyphony where melodies are copied from other voices/parts
- Unison – all musicians playing EXACTLY the same thing (not in octaves)
- Canon – a round
- Layered
- Antiphony
- A Cappella



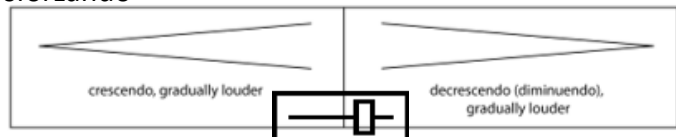
P – Pitch:Harmony

- Perfect cadence – when the music sounds finished (V – I, dominant to tonic)
- Imperfect cadence – when the music sounds unfinished (I or IV – V)
- Plagal cadence – when the music sounds finished but moves from IV – I rather than V – I. This is the cadence used in religious music on 'amen'
- Interrupted cadence – a surprise chord in place of the expected tonic, delaying the resolution to the phrase/piece
- Tierce de Picardie – when the music is in a minor key but ends on a major chord
- Diatonic – using notes of the key only
- Chromatic – using notes outside of the key (requires accidentals)

D – Dynamics

Dynamic Sign	Italian	English
<i>ppp</i>	<i>pianississimo</i>	Very, very soft.
<i>pp</i>	<i>pianissimo</i>	Very soft.
<i>p</i>	<i>piano</i>	Soft.
<i>mp</i>	<i>mezzo piano</i>	Moderately soft.
<i>mf</i>	<i>mezzo forte</i>	Moderately loud.
<i>f</i>	<i>forte</i>	Loud.
<i>ff</i>	<i>fortissimo</i>	Very loud.
<i>fff</i>	<i>fortississimo</i>	Very, very loud.

sforzando



R - Rhythm

- Syncopation – where music is off the beat (not exactly on a regular beat/pulse)
- Cross-rhythm – different beat groupings against each other (e.g. 3 against 2)
- Polyrhythm – more than 2 rhythms played at once
- Triplet – 3 even notes within a beat
- Shuffle / Swung rhythms – mon-key / tum-ty rhythms
- Anacrusis – when the melody comes in before beat 1/upbeat
- Hemiola – a duple (2) pulse/feel in a triple (3) time/metre
- Backbeat – strong emphasis on beats 2 and 4 of the bar
- Augmentation
- Diminution. * Pause
- Dotted rhythm / scotch snap = lombardic rhythm
- Groove
- Back beat. *Dance rhythms

P - Pitch

- How high or low the sound is
- Instrument range – the pitches available to an instrument
- Chalumeau register – lowest clarinet register
- Altissimo register – highest clarinet register
- Falsetto – high vocal register
- Tessitura – used to describe a particular range within an instruments capability (high tessitura = higher register used)
- Slide/portamento/glissando
- Pitch bend
- Improvisation
- Blues notes

S - Structure

- Binary Form - AB
- Ternary form - ABA
- Rondo form – ABACADA...
- Arch shape - ABCBA
- Through-composed – ABCDEF...
- Theme and Variations – A1, A2, A3, A4...
- 12-bar Blues – typical blues chord progression using the primary chords.
- Pop song – Verse, Chorus, Middle 8, Break, Instrumental, Drum fill
- Minuet & Trio / Scherzo & Trio - A=AABB B=AABB A'=AABB
- Ground Bass
- Continuo
- Cadenza
- Sonata
- Strophic
- Cyclic



A - Articulation

- Staccato – short and snappy notes
- Legato – smooth melodies
- Tenuto
- Marcato
- accent

Sucking Sweets During Rehearsal Makes The Teacher Act Pretty Tormented

P – Pitch:Melody

- Conjunct – stepwise melodies that ascend or descend using notes next door
- Disjunct – melodies with larger intervals
- Interval – the distance between two notes
- Triadic/chordal – when tune uses the notes of the triad as part of its melody.
- Chromatic – going up or down the chromatic scale (semitones) or Chromatic movement (contains notes not in the scale)
- Ornament – melodic decoration : trill, mordent, acciaccatura, Appoggiatura, turn
- Countermelody – an additional melody complimenting the main melody
- Scalic – melodies based on a scale

- Sequence – when a tune is repeated with exactly the same shape but at a higher or lower pitch
- Phrase (balanced)
- Riff – catchy melody often used in pop and rock music
- Hook Pentatonic Whole-tone
- Ostinato – repeating pattern
- Syllabic – where each syllable of a word has a pitch/note
- Arpeggio /broken chord– the notes of the triad played ascending or descending
- Melismatic – where one syllable is stretched across multiple pitches
- Development – inverted, retrograded, augmented, diminished

Popular music includes:

- **POP**
- **ROCK**
- **RAP**
- **HIP HOP**
- **REGGAE**

Plus many other genres, e.g. soul, ska, heavy metal, R&B, country, rock'n'roll.

FUSION: when two different styles are mixed together. This can be two styles of popular music e.g. 'rap metal', or could combine a popular music genre with other styles, folk-rock, gospel, world music, classical to create a new and interesting sound. **Jazz fusion** (jazz and pop) is a popular genre.

Instruments

ELECTRIC GUITAR:

- **Lead guitar:** plays the melody/ solos/riffs
- **Rhythm guitar:** plays the chords/ accompaniment.

BASS GUITAR: plays the bass line.

DRUM KIT: provides the beat.

LEAD SINGER: the main vocalist.

BACKING VOCALS: singers who provide harmony.

Pop/rock groups may also include **acoustic** (not electric) instruments e.g. trumpet, trombone, saxophone and/or electronic keyboards/synthesizers.

Features and techniques found in popular music

Riff	A short, repeated pattern.
Hammer on	Finger brought sharply down onto the string.
Pitch bend	Altering (bending) the pitch slightly.
Power chords	A guitar chord using the root and 5 th note (no 3 rd).
Distortion	An effect which distorts the sound (creates a 'grungy' sound).
Slap bass	A percussive sound on the bass guitar made by bouncing the strings on the fret board.
Fill	A short, improvised drum solo.
Rim shot	Rim and head of drum hit at same time.
Belt	A bright, powerful vocal sound, high in the chest voice.
Falsetto	Male voice in a higher than usual range.
Syllabic	One note sung per syllable.
Melismatic	Each syllable sung to a number of different notes.
A cappella	Voices singing without instrumental accompaniment.

The structure of a pop/rock song may include:

INTRO: short opening section, usually instrumental.

VERSE: same music but different lyrics each time.

CHORUS: repeated with the same lyrics each time (refrain).

MIDDLE EIGHT: a link section, often eight bars, with different musical ideas.

BRIDGE: a link/transition between two sections.

OUTRO: an ending to finish the song (coda).

*You may also hear a pre-chorus, instrumental interlude or instrumental solo.

*Strophic songs, 32 bar songs (AABA) and 12 bar blues are also found in popular music.

A typical rock ballad in verse-chorus form could follow the pattern:

- Intro
- Verse 1
- Chorus
- Verse 2
- Chorus
- MiddleEight
- Chorus
- Outro

Technology

Amplified	Made louder (with an amplifier).
Synthesized	Sounds created electronically.
Panning	Moving the sound between left and right speakers.
Phasing	A delay effect.
Sample	A short section of music that is reused (e.g. looped, layered).
Reverb	An electronic echo effect.

Key ingredients of a pop song			Instruments/voices and what they might do																					
1. Layers: melody, chords, bass line, and beat	The melody is the main tune, usually sung by the lead singer . The lead guitar may also play melodies. Chords are played by the rhythm guitar , or perhaps added on piano or synthesiser, or even sung by backing singers . The bass line is usually played by a bass guitar . The beat is usually played on drum kit .		1. Singers	1. Vibrato , where the note wobbles in pitch slightly. Makes the sound warmer and more expressive.																				
2. Optional layers	There may be countermelodies played by the lead guitar, sung by backing singers, or put in on extra instruments such as synth, strings, or anything else.			2. Portamento is a slide between notes.																				
3. Structure	Verse-chorus structure is the most common. There is likely to be an intro , a coda , and a middle 8 or instrumental break .	<table border="1"> <thead> <tr> <th colspan="3">3. Song structure</th> </tr> </thead> <tbody> <tr> <td>1</td> <td>Intro</td> <td>The section of the music that introduces the song.</td> </tr> <tr> <td>2</td> <td>Verse</td> <td>A section that repeats in a song, it has the same music, but different lyrics</td> </tr> <tr> <td>3</td> <td>Chorus</td> <td>The main section of a song, it will repeat both the lyrics and the music in the same way..</td> </tr> <tr> <td>4</td> <td>Bridge</td> <td>A section in a song that links two other sections.</td> </tr> <tr> <td>5</td> <td>Instrumental</td> <td>A section in the music with no lyrics and the instruments contain the melodic interest.</td> </tr> <tr> <td>6</td> <td>Outro</td> <td>The ending section of a song.</td> </tr> </tbody> </table>	3. Song structure			1	Intro	The section of the music that introduces the song.	2	Verse	A section that repeats in a song, it has the same music, but different lyrics	3	Chorus	The main section of a song, it will repeat both the lyrics and the music in the same way..	4	Bridge	A section in a song that links two other sections.	5	Instrumental	A section in the music with no lyrics and the instruments contain the melodic interest.	6	Outro	The ending section of a song.	3. Falsetto is when a man sings very high. Michael Jackson, Sam Smith and Freddie Mercury all sing falsetto some of the time.
3. Song structure																								
1	Intro	The section of the music that introduces the song.																						
2	Verse	A section that repeats in a song, it has the same music, but different lyrics																						
3	Chorus	The main section of a song, it will repeat both the lyrics and the music in the same way..																						
4	Bridge	A section in a song that links two other sections.																						
5	Instrumental	A section in the music with no lyrics and the instruments contain the melodic interest.																						
6	Outro	The ending section of a song.																						
4. Other ingredients	The bass line or guitar part might feature riffs . There may be a particularly catchy part: this is the hook . Some songs also have a modulation .		4. Rubato , expressive speeding up and slowing down.																					
TECHNOLOGY	Sequencing	The creation of music on a computer	5. A cappella – singing with no instrumental accompaniment.																					
Multi-tracking	Using a DAW to compile a track from lots of individual tracks		6. Scat is when singers sing nonsense syllables like 'doo'.																					
Sampling	A digitally recorded clip often taken from another wellknown song		7. Riffing is when a singer ornaments the melody with a lot of extra notes, usually at the end of a phrase. Mariah Carey.																					
FUSION	The combination of 2 or more musical styles		8. Vocals may be multi-tracked , or may have effects such as autotune or vocoder applied to them.																					
			2. Guitars																					
			1. The lead guitar plays melodies. These might be solos or riffs , or perhaps countermelodies over the singer's tune. Sometimes effects such as distortion , chorus or flanger are used.																					
			2. Rhythm guitar can be acoustic or electric, and plays chords . These might be strummed or picked (to make broken chords).																					
			3. Bass guitar plays the bass line – the lowest notes. Bass guitar does not play chords. Sometimes adds glissandos .																					
			3. Drum kit																					
			1. A drum kit is made up of snare , hi-hat , bass (or kick) drum , tom-toms and ride and crash cymbals.																					
			2. Often the snare emphasises the backbeat .																					
			3. At the end of phrases, the kit may play fills .																					
			4. Drum pads or drum machines are digital alternatives to an acoustic kit.																					
			4. Keyboards																					
			1. Piano or synthesizers are the main kinds of keyboards found in pop, although electric organs may be used too.																					
			2. Piano is often used in ballads . It can play chords , bass lines and melodies . Some artists, i.e. Elton John, make a real feature of the piano part.																					
			3. Synthesizers (synths) are electronic keyboards capable of playing any kind of sound. Because of this they are very adaptable, and can imitate the sound of anything else or make unique timbres.																					

1. Bhangra		
1	Bhangra	A style of music that developed in the UK in the 1970s. It combines North Indian and western dance styles.
2	Dhol	A double headed Indian drum.
3	Chaal	A repetitive triplet crotch-quaver rhythm played in Bhangra music.
4	Punjabi and English	Two languages often used in Bhangra music.
5	Sitar	An Indian stringed instrument
6	Tabla	A pair of Indian drums.

2. Afro fusion		
1	Afrofusion	A fusion that combines elements of African and Western music.
2	Apartheid	Segregation of people based on their race. This influenced the recording of the album Graceland.
3	Paul Simon	Wrote the album Graceland, iconic in the development of the fusion.
4	Ladysmith black Mambazo	African vocal group who were key in the recording of Graceland.
5	Djembe	An African drum.
6	Balafon	A tuned percussion instrument, similar to a marimba or xylophone.

Key Terms			
1. A cappella	Voices, without instrumental accompaniment	18. Melisma (melismatic)	Lots of notes sung to a single syllable
2. Backbeat	Emphasis on 2 nd and 4 th beats of the bar.	19. Melody	The main tune – played on instruments or sung
3. Bassline	The lowest part in the music – provides the harmonic outline	20. Middle 8	The section of a song where there is a new, different tune.
4. Bridge	A section that links the verse and chorus. Sometimes called a pre-chorus .	21. Modulation	A key change.
5. Broken chord	Each note played separately. On guitar, usually done with finger-picking .	22. Multitracking	Nearly all pop songs are recorded like this: each part is recorded separately and then put together
6. Call & response	Often used between the lead vocalist and the backing singers, who repeat or answer what the lead singer has sung.	23. Panning	Putting more or less sound through each speaker, so that a sound comes from the left, or right.
7. Chord	More than 1 note played simultaneously	24. Pentatonic	Only using 5 notes
8. Coda	The end section of a song.	25. Picking (fingerpicking)	On guitar, playing one note at a time (as opposed to strumming)
9. Distortion	An effect used on guitars: a dirty, fuzzy sound.	26. Portamento	When a singer slides between notes
10. Drone	A long held note – tonic or dominant	27. Reverb	Adds a sense of space to a sound.
11. Fill	At the end of a phrase, the drummer plays a more complex part to fill in.	28. Riff	A repeating melodic or rhythmic idea
12. Flanger	A guitar effect that makes a whooshing sound	29. Riffing	Highly decorated singing
13. Glissando	A slide between two notes, where separate, quick, individual notes can be heard, i.e. on piano	30. Rubato	Expressive slight changes of tempo
14. Harmonic pace	How often the chords change, i.e. one chord per bar, two chords per bar	31. Sampling	When a short extract of another recording (a sample) is used in a song
15. Hook	The catchy part of the song, often in the chorus	32. Strumming	Playing all the strings of a guitar at once to play chords
16. Instrumental break	A section where the singing stops and there is a solo on an instrument	33. Syllabic	Each syllable is sung with one single note
17. Looping	Technology-based method of repeating a short musical idea	34. Unison	Everyone singing/playing the same notes.

What Makes a Good Song?

Exploring Popular Songs and Musical Arrangements



A. Popular Song Structure

SONG STRUCTURE – How a song is made up of or divided into different sections (see below) and the order in which these sections occur. To work out the structure of a song, it's helpful to analyse the **LYRICS** and listen to a recording for the song (for instrumental sections).

INTRO – often shortened to 'intro', the first section of a song which sets the mood of the song and is sometimes, but not always, an instrumental section using the song's chord pattern.

VERSES – songs normally have several verses. Verses introduce the song's theme and have the same melody but different lyrics for each verse which helps develop the song's narrative and story. Songs made up entirely of verses are called **STROPHIC**.

LINK – a optional short section often used to join different parts of a song together, often instrumental, and sometimes joins verses together or appears at other points within a song.

PRE-CHORUS – an optional section of music that occurs before the **CHORUS** which helps the music move forward and "prepare" for what is to come.

CHORUS – occurs several times within a song and contains the most memorable **HOOK/RIFF**. The chorus relays the message of the song and is repeated with the same melody and lyrics each time it is heard. In popular songs, the chorus is often repeated several times towards the end of the song.

MIDDLE 8/BRIDGE – a section (often 8 bars in length) that provides contrasting musical material often featuring an instrumental or vocal solo using new musical material allowing the performer to display their technical skill on their instrument or voice.

CODA/OUTRO – The final section of a popular song which brings it to an end (Coda is Italian for "tail"!)

B. Key Words

LYRICS – The words of a song, usually consisting of **VERSES** and a **CHORUS**.

HOOK – A 'musical hook' is usually the 'catchy bit' of the song that you will remember. It is often short and used and repeated in different places throughout the piece. Hooks can be either **MELODIC, RHYTHMIC** or **VERBAL/LYRICAL**.

RIFF – A repeated musical pattern often used in the introduction and instrumental breaks in a song or piece of music. Riffs can be rhythmic, melodic or lyrical, short and repeated.

MELODY – The main tune of the song often sung by the **LEAD SINGER**.

COUNTER-MELODY – An 'extra' melody often performed 'on top of' the main melody that 'fits' with it a **DESCANT** or **INSTRUMENTAL SOLO**.

TEXTURE – The layers that make up a song e.g., *Melody, Counter-Melody, Hooks/Riffs, Chords, Accompaniment, Bass Line*.

C. Lead Sheet Notation and Arrangements

A **LEAD SHEET** is a form of musical **NOTATION** that contains only the essential elements of a popular song such as the **MELODY, LYRICS, RIFFS, CHORDS** (often as guitar chord symbols) and **BASS LINE**; it is not as developed as a **FULL SCORE ARRANGEMENT** and is open to interpretation by

performers who need to use and adapt the given elements to create their own musical **ARRANGEMENT**: their "version" of an existing song.

COVER (VERSION) – A new performance, remake or recording by someone other than the original artist or composer of the song.

D. Conjunct and Disjunct Melodic Motion

CONJUNCT MELODIC MOTION – Melodies which move mainly by step or use notes which are next to or close to one another.

DISJUNCT MELODIC MOTION – Melodies which move mainly by leap or use notes which are not next to or close to one another.

MELODIC RANGE – The distance between the lowest and highest pitched notes in a melody.

Conjunct



Disjunct



E. Song Timbre and Sonority (Instruments that are used to Accompany Songs)



Pop Bands often feature a **DRUM KIT** and **PERCUSSION** to provide the rhythm along with **ELECTRIC GUITARS (LEAD GUITAR, RHYTHM GUITAR and BASS GUITAR)** and **KEYBOARDS**. Sometimes **ACOUSTIC INSTRUMENTS** are used such as the **PIANO** or **ACOUSTIC GUITAR**. **ORCHESTRAL INSTRUMENTS** are often found in pop songs such as the **STRINGS, SAXOPHONE, TROMBONE** and **TRUMPET**.



Singers are essential to a pop song - **LEAD SINGER** – Often the "frontline" member of the band (most famous) who sings most of the melody line to the song. **BACKING SINGERS** support the lead singer providing **HARMONY** or a **COUNTER-MELODY** (a melody that is often higher in pitch and different, but still 'fits with' the main melody) and do not sing all the time but just at certain points within a pop song e.g. in the chorus.